



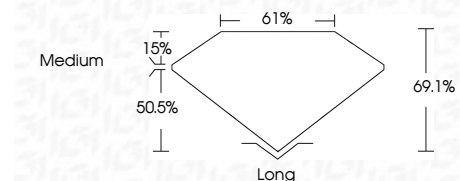
ELECTRONIC COPY

LG668476539 Report verification at igi.org



December 10, 2024 IGI Report Number LG668476539 Description LABORATORY GROWN DIAMOND Shape and Cutting Style EMERALD CUT Measurements 6.89 X 4.85 X 3.35 MM

GRADING RESULTS Carat Weight 1.10 CARAT Color Grade E Clarity Grade VVS 1



ADDITIONAL GRADING INFORMATION Polish EXCELLENT Symmetry EXCELLENT Fluorescence NONE Inscription(s) IGI LG668476539 Comments: This Laboratory Grown Diamond was created by Chemical Vapor Deposition (CVD) growth process. Type IIa



December 10, 2024 IGI Report No. LG668476539 EMERALD CUT 1.10 CARAT E 6.89 X 4.85 X 3.35 MM Color Grade VVS 1 Depth 61% Table 61% Girdle Medium Culet Long Polish EXCELLENT Symmetry EXCELLENT Fluorescence NONE Inscription(s) IGI LG668476539 Comments: This Laboratory Grown Diamond was created by Chemical Vapor Deposition (CVD) growth process. Type IIa

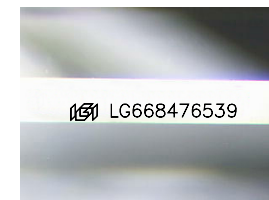
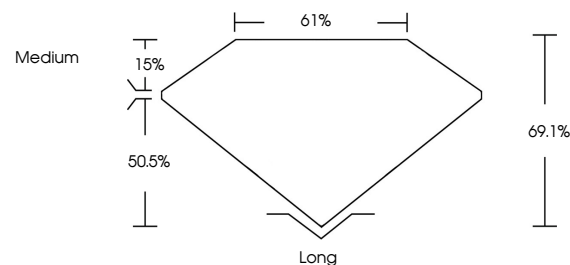
December 10, 2024 IGI Report Number LG668476539 Description LABORATORY GROWN DIAMOND Shape and Cutting Style EMERALD CUT Measurements 6.89 X 4.85 X 3.35 MM

GRADING RESULTS Carat Weight 1.10 CARAT Color Grade E Clarity Grade VVS 1

ADDITIONAL GRADING INFORMATION Polish EXCELLENT Symmetry EXCELLENT Fluorescence NONE Inscription(s) IGI LG668476539

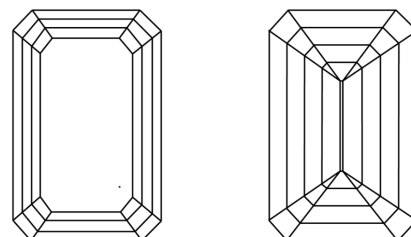
Comments: This Laboratory Grown Diamond was created by Chemical Vapor Deposition (CVD) growth process. Type IIa

PROPORTIONS



Sample Image Used

CLARITY CHARACTERISTICS



KEY TO SYMBOLS

Red symbols indicate internal characteristics. Green symbols indicate external characteristics.

COLOR

D E F G H I J Faint Very Light Light

CLARITY

IF WS 1-2 VS 1-2 SI 1-2 I 1-3 Internally Flawless Very Very Slightly Included Very Slightly Included Slightly Included Included

