



ELECTRONIC COPY

LG728504037 Report verification at igi.org



August 14, 2025 IGI Report Number LG728504037 Description LABORATORY GROWN DIAMOND Shape and Cutting Style PRINCESS CUT Measurements 8.70 X 8.68 X 6.32 MM GRADING RESULTS Carat Weight 4.10 CARATS Color Grade E Clarity Grade VVS 2

LABORATORY GROWN DIAMOND REPORT

August 14, 2025 IGI Report Number LG728504037 Description LABORATORY GROWN DIAMOND Shape and Cutting Style PRINCESS CUT Measurements 8.70 X 8.68 X 6.32 MM

GRADING RESULTS

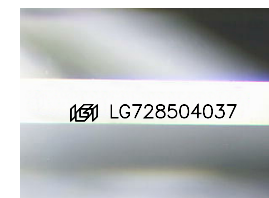
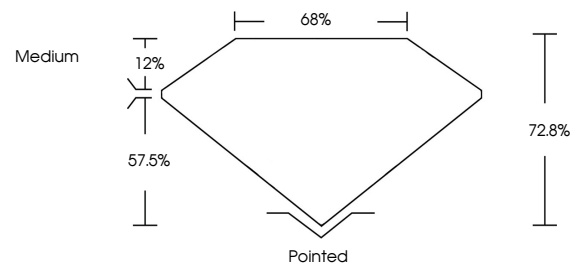
Carat Weight 4.10 CARATS Color Grade E Clarity Grade VVS 2

ADDITIONAL GRADING INFORMATION

Polish EXCELLENT Symmetry EXCELLENT Fluorescence NONE Inscription(s) LG728504037

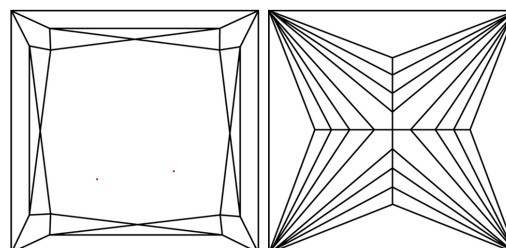
Comments: This Laboratory Grown Diamond was created by Chemical Vapor Deposition (CVD) growth process. Type IIa

PROPORTIONS



Sample Image Used

CLARITY CHARACTERISTICS



KEY TO SYMBOLS

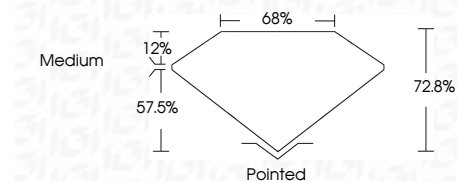
Red symbols indicate internal characteristics. Green symbols indicate external characteristics.

COLOR

D E F G H I J Faint Very Light Light

CLARITY

IF VVS 1-2 VS 1-2 SI 1-2 I 1-3 Internally Flawless Very Very Slightly Included Very Slightly Included Slightly Included Included



ADDITIONAL GRADING INFORMATION

Polish EXCELLENT Symmetry EXCELLENT Fluorescence NONE Inscription(s) LG728504037 Comments: This Laboratory Grown Diamond was created by Chemical Vapor Deposition (CVD) growth process. Type IIa



August 14, 2025 IGI Report No LG728504037 PRINCESS CUT 4.10 CARATS E Color Grade VVS 2 8.70 X 8.68 X 6.32 MM 72.8% Depth 68% Table Medium Grading Polished EXCELLENT EXCELLENT NONE Fluorescence (s) LG728504037 Comments: This Laboratory Grown Diamond was created by Chemical Vapor Deposition (CVD) growth process. Type IIa