



**ELECTRONIC COPY**

LG729517832  
Report verification at igi.org



August 22, 2025

IGI Report Number **LG729517832**

Description **LABORATORY GROWN DIAMOND**

Shape and Cutting Style **PEAR BRILLIANT**

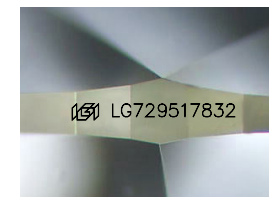
Measurements **12.51 X 7.97 X 5.13 MM**

**GRADING RESULTS**

Carat Weight **3.05 CARATS**

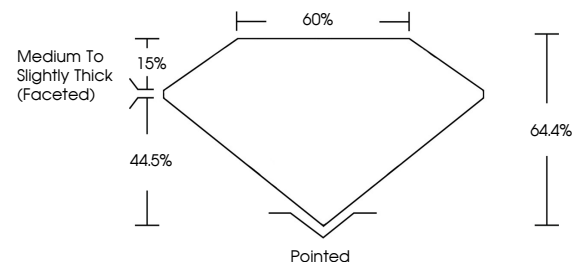
Color Grade **F**

Clarity Grade **VS 2**

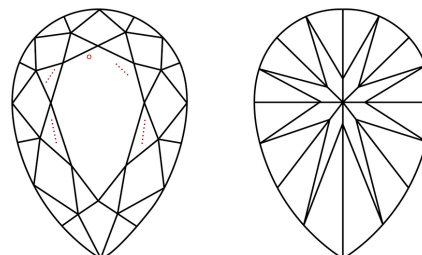


Sample Image Used

**PROPORTIONS**



**CLARITY CHARACTERISTICS**



**KEY TO SYMBOLS**

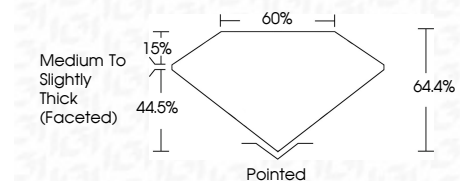
Red symbols indicate internal characteristics.  
Green symbols indicate external characteristics.

**COLOR**

D E F G H I J Faint Very Light Light

**CLARITY**

IF	VS <sup>1-2</sup>	VS <sup>1-2</sup>	SI <sup>1-2</sup>	I <sup>1-3</sup>
Internally Flawless	Very Very Slightly Included	Very Slightly Included	Slightly Included	Included



**ADDITIONAL GRADING INFORMATION**

Polish **EXCELLENT**

Symmetry **EXCELLENT**

Fluorescence **NONE**

Inscription(s) **IGI LG729517832**

Comments: This Laboratory Grown Diamond was created by Chemical Vapor Deposition (CVD) growth process. Type IIa



**IGI**



August 22, 2025  
IGI Report No LG729517832  
PEAR BRILLIANT

3.05 CARATS  
F

12.51 X 7.97 X 5.13 MM

Carat Weight  
Color Grade  
Clarity Grade  
Table  
Depth  
Girdle

3.05  
F  
VS 2  
64.4%  
44.5%  
60%

Medium to Slightly Thick (Faceted)

Pointed  
EXCELLENT  
EXCELLENT  
NONE  
IGI LG729517832

Comments: This Laboratory Grown Diamond was created by Chemical Vapor Deposition (CVD) growth process. Type IIa