



ELECTRONIC COPY

LG738526466
Report verification at igi.org



September 30, 2025

IGI Report Number **LG738526466**

Description **LABORATORY GROWN DIAMOND**

Shape and Cutting Style **OVAL BRILLIANT**

Measurements **10.66 X 7.77 X 4.91 MM**

GRADING RESULTS

Carat Weight **2.55 CARATS**

Color Grade **D**

Clarity Grade **VS 1**

September 30, 2025
IGI Report Number **LG738526466**
Description **LABORATORY GROWN DIAMOND**
Shape and Cutting Style **OVAL BRILLIANT**
Measurements **10.66 X 7.77 X 4.91 MM**

GRADING RESULTS

Carat Weight **2.55 CARATS**

Color Grade **D**

Clarity Grade **VS 1**

ADDITIONAL GRADING INFORMATION

Polish **EXCELLENT**

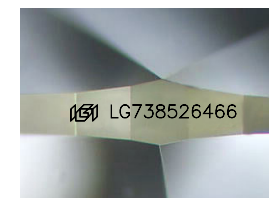
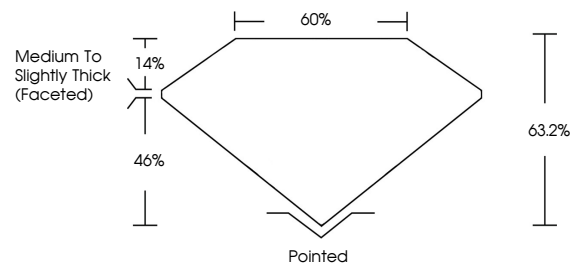
Symmetry **EXCELLENT**

Fluorescence **NONE**

Inscription(s) **IGI LG738526466**

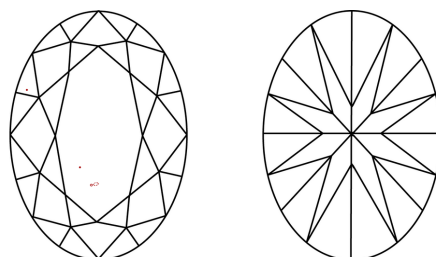
Comments: This Laboratory Grown Diamond was created by Chemical Vapor Deposition (CVD) growth process. Type IIa

PROPORTIONS



Sample Image Used

CLARITY CHARACTERISTICS



KEY TO SYMBOLS

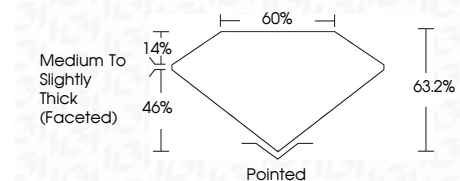
Red symbols indicate internal characteristics.
Green symbols indicate external characteristics.

COLOR

D E F G H I J Faint Very Light Light

CLARITY

IF	VS ¹⁻²	VS ¹⁻²	SI ¹⁻²	I ¹⁻³
Internally Flawless	Very Very Slightly Included	Very Slightly Included	Slightly Included	Included



ADDITIONAL GRADING INFORMATION

Polish **EXCELLENT**

Symmetry **EXCELLENT**

Fluorescence **NONE**

Inscription(s) **IGI LG738526466**

Comments: This Laboratory Grown Diamond was created by Chemical Vapor Deposition (CVD) growth process. Type IIa



IGI



September 30, 2025
IGI Report No LG738526466
OVAL BRILLIANT
10.66 X 7.77 X 4.91 MM
2.55 CARATS
D
VS 1
63.2%
46%
14%
Medium to Slightly Thick (Faceted)
Pointed
EXCELLENT
EXCELLENT
NONE
IGI LG738526466
Comments: This Laboratory Grown Diamond was created by Chemical Vapor Deposition (CVD) growth process. Type IIa