



**ELECTRONIC COPY**

LG743541135  
Report verification at igi.org



October 16, 2025

IGI Report Number **LG743541135**

Description **LABORATORY GROWN DIAMOND**

Shape and Cutting Style **EMERALD CUT**

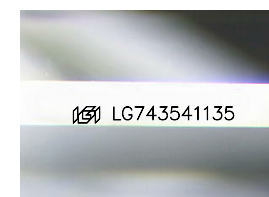
Measurements **9.64 X 6.85 X 4.69 MM**

**GRADING RESULTS**

Carat Weight **3.06 CARATS**

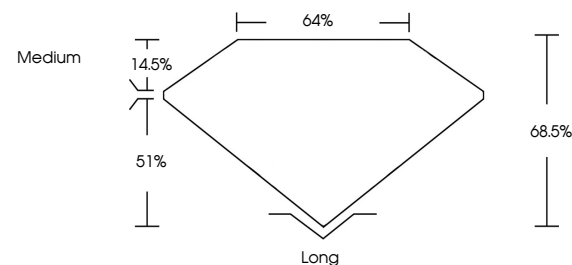
Color Grade **F**

Clarity Grade **VVS 2**

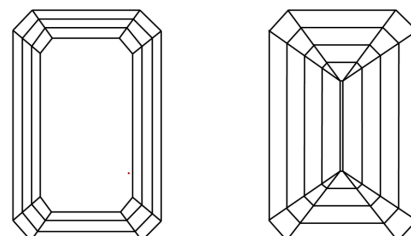


Sample Image Used

**PROPORTIONS**



**CLARITY CHARACTERISTICS**



**KEY TO SYMBOLS**

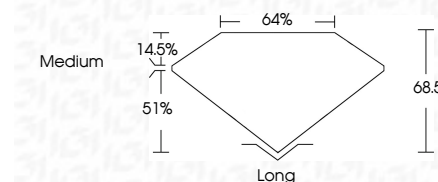
Red symbols indicate internal characteristics.  
Green symbols indicate external characteristics.

**COLOR**

D E F G H I J Faint Very Light Light

**CLARITY**

FL	IF	VVS <sup>1-2</sup>	VS <sup>1-2</sup>	SI <sup>1-2</sup>	I <sup>1-3</sup>
Flawless	Internally Flawless	Very Very Slightly Included	Very Slightly Included	Slightly Included	Included



**ADDITIONAL GRADING INFORMATION**

Polish **EXCELLENT**

Symmetry **EXCELLENT**

Fluorescence **NONE**

Inscription(s) **IGI LG743541135**

Comments: This Laboratory Grown Diamond was created by Chemical Vapor Deposition (CVD) growth process. Type IIa



**IGI**



October 16, 2025  
IGI Report No LG743541135  
**EMERALD CUT**  
9.64 X 6.85 X 4.69 MM  
3.06 CARATS  
F  
Color Grade  
VVS 2  
68.5%  
51%  
14.5%  
Medium  
Long  
EXCELLENT  
EXCELLENT  
NONE  
IGI LG743541135  
Comments: This Laboratory Grown Diamond was created by Chemical Vapor Deposition (CVD) growth process. Type IIa