



ELECTRONIC COPY

LG749513889
Report verification at igi.org



November 14, 2025

IGI Report Number **LG749513889**

Description **LABORATORY GROWN DIAMOND**

Shape and Cutting Style **PRINCESS CUT**

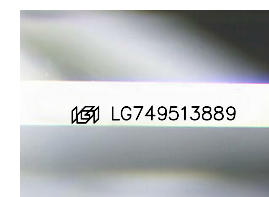
Measurements **7.92 X 7.80 X 5.51 MM**

GRADING RESULTS

Carat Weight **2.90 CARATS**

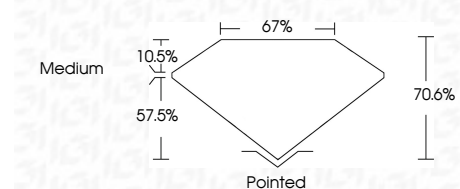
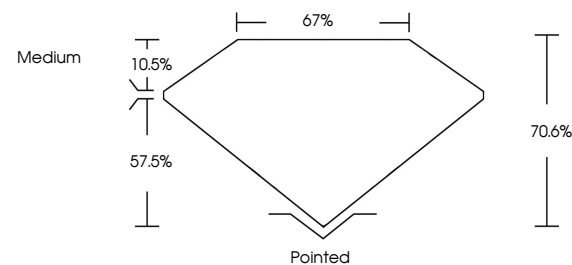
Color Grade **G**

Clarity Grade **VS 1**

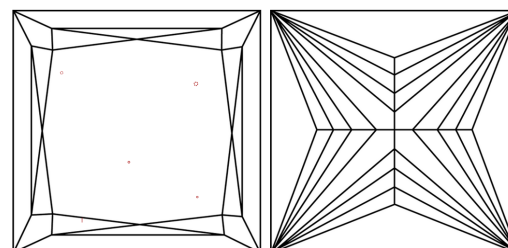


Sample Image Used

PROPORTIONS



CLARITY CHARACTERISTICS



KEY TO SYMBOLS

Red symbols indicate internal characteristics.
Green symbols indicate external characteristics.

COLOR

D E F G H I J Faint Very Light Light

CLARITY

FL	IF	VS ¹⁻²	VS ¹⁻²	SI ¹⁻²	I ¹⁻³
Flawless	Internally Flawless	Very Very Slightly Included	Very Slightly Included	Slightly Included	Included

ADDITIONAL GRADING INFORMATION

Polish **EXCELLENT**

Symmetry **EXCELLENT**

Fluorescence **NONE**

Inscription(s) **IGI LG749513889**

Comments: This Laboratory Grown Diamond was created by Chemical Vapor Deposition (CVD) growth process. Type IIa



IGI



November 14, 2025
IGI Report No LG749513889
PRINCESS CUT

2.90 CARATS
Color Grade G
Clarity Grade VS 1
Depth 70.6%
Table 10.5%
Girdle 67%
Medium

Pointed
EXCELLENT
EXCELLENT
NONE
IGI LG749513889

Comments: This Laboratory Grown Diamond was created by Chemical Vapor Deposition (CVD) growth process. Type IIa