



ELECTRONIC COPY

LG750521515
Report verification at igi.org

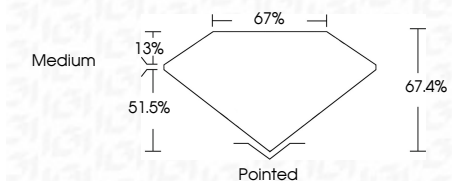


November 20, 2025
IGI Report Number LG750521515
Description LABORATORY GROWN DIAMOND
Shape and Cutting Style CUT CORNERED RECTANGULAR MODIFIED BRILLIANT

Measurements 10.44 X 7.17 X 4.83 MM

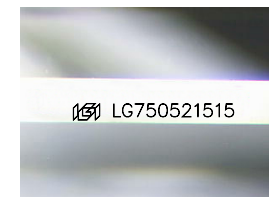
GRADING RESULTS

Carat Weight 3.10 CARATS
Color Grade E
Clarity Grade VS 1



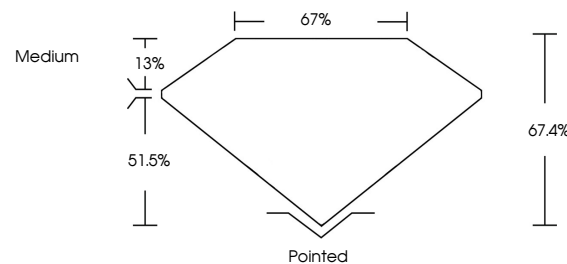
ADDITIONAL GRADING INFORMATION

Polish EXCELLENT
Symmetry EXCELLENT
Fluorescence NONE
Inscription(s) IGI LG750521515
Comments: This Laboratory Grown Diamond was created by Chemical Vapor Deposition (CVD) growth process. Type IIa

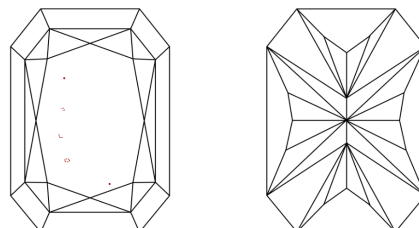


Sample Image Used

PROPORTIONS



CLARITY CHARACTERISTICS



KEY TO SYMBOLS

Red symbols indicate internal characteristics.
Green symbols indicate external characteristics.

COLOR

D E F G H I J Faint Very Light Light

CLARITY

FL IF VS 1-2 VS 2-3 SI 1-2 I 1-3
Flawless Internally Flawless Very Very Slightly Included Very Slightly Included Slightly Included Included



November 20, 2025
IGI Report No LG750521515
CUT CORNERED RECT. MODIFIED BRILLIANT
10.44 X 7.17 X 4.83 MM
3.10 CARATS
E
Color Grade
VS 1
67.4%
67%
Medium
Pointed
EXCELLENT
EXCELLENT
NONE
IGI LG750521515
Comments: This Laboratory Grown Diamond was created by Chemical Vapor Deposition (CVD) growth process. Type IIa