



ELECTRONIC COPY

LG750525223
Report verification at igi.org



November 21, 2025

IGI Report Number **LG750525223**

Description **LABORATORY GROWN DIAMOND**

Shape and Cutting Style **EMERALD CUT**

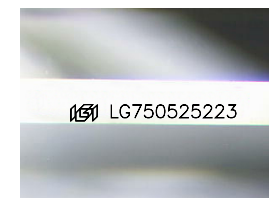
Measurements **9.58 X 6.99 X 4.76 MM**

GRADING RESULTS

Carat Weight **3.09 CARATS**

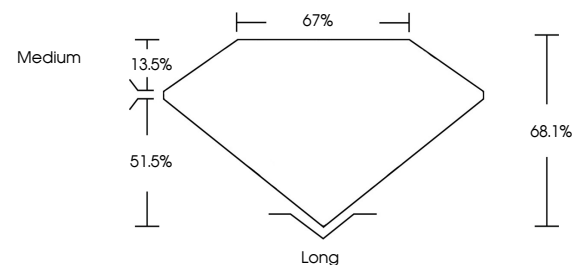
Color Grade **E**

Clarity Grade **VVS 2**

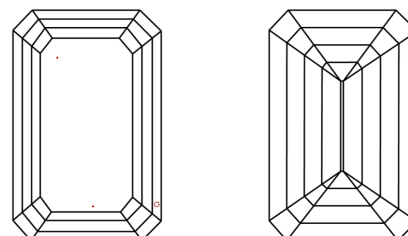


Sample Image Used

PROPORTIONS



CLARITY CHARACTERISTICS



KEY TO SYMBOLS

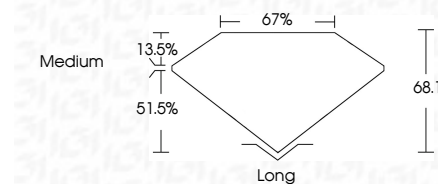
Red symbols indicate internal characteristics.
Green symbols indicate external characteristics.

COLOR

D E F G H I J Faint Very Light Light

CLARITY

FL	IF	VVS ¹⁻²	VS ¹⁻²	SI ¹⁻²	I ¹⁻³
Flawless	Internally Flawless	Very Very Slightly Included	Very Slightly Included	Slightly Included	Included



ADDITIONAL GRADING INFORMATION

Polish **EXCELLENT**

Symmetry **EXCELLENT**

Fluorescence **NONE**

Inscription(s) **IGI LG750525223**

Comments: This Laboratory Grown Diamond was created by Chemical Vapor Deposition (CVD) growth process. Type IIa



IGI



November 21, 2025	3.09 CARATS	E	VVS 2	68.1%	67%	Medium	Long
IGI Report No LG750525223	EMERALD CUT						
9.58 X 6.99 X 4.76 MM	Color Grade						
Depth	Clarity Grade						
Table	Symmetry						
Girdle	Fluorescence						
Culet	Inscription(s)						
Polish							
Symmetry							
Fluorescence							
Inscription(s)							

Comments: This Laboratory Grown Diamond was created by Chemical Vapor Deposition (CVD) growth process. Type IIa