



ELECTRONIC COPY

LG752590610
Report verification at igi.org



December 1, 2025

IGI Report Number **LG752590610**

Description **LABORATORY GROWN DIAMOND**

Shape and Cutting Style **EMERALD CUT**

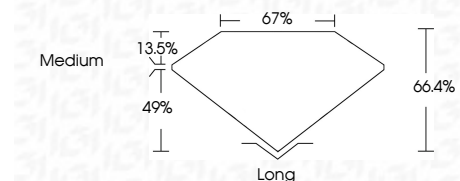
Measurements **6.77 X 5.00 X 3.32 MM**

GRADING RESULTS

Carat Weight **1.10 CARAT**

Color Grade **D**

Clarity Grade **VVS 2**



ADDITIONAL GRADING INFORMATION

Polish **EXCELLENT**

Symmetry **EXCELLENT**

Fluorescence **NONE**

Inscription(s) **IGI LG752590610**

Comments: This Laboratory Grown Diamond was created by Chemical Vapor Deposition (CVD) growth process. Type IIa



December 1, 2025	1.10 CARAT	D	VVS 2	66.4%	67%	Medium	Long
IGI Report No LG752590610	6.77 X 5.00 X 3.32 MM	D	VVS 2	66.4%	67%	Medium	Long
EMERALD CUT	1.10 CARAT	D	VVS 2	66.4%	67%	Medium	Long
Carat Weight	1.10 CARAT	D	VVS 2	66.4%	67%	Medium	Long
Color Grade	D	D	VVS 2	66.4%	67%	Medium	Long
Clarity Grade	VVS 2	D	VVS 2	66.4%	67%	Medium	Long
Depth	66.4%	D	VVS 2	66.4%	67%	Medium	Long
Table	67%	D	VVS 2	66.4%	67%	Medium	Long
Girdle	Medium	D	VVS 2	66.4%	67%	Medium	Long
Culet	None	D	VVS 2	66.4%	67%	Medium	Long
Polish	EXCELLENT	D	VVS 2	66.4%	67%	Medium	Long
Symmetry	EXCELLENT	D	VVS 2	66.4%	67%	Medium	Long
Fluorescence	NONE	D	VVS 2	66.4%	67%	Medium	Long
Inscription(s)	IGI LG752590610	D	VVS 2	66.4%	67%	Medium	Long

Comments: This Laboratory Grown Diamond was created by Chemical Vapor Deposition (CVD) growth process. Type IIa

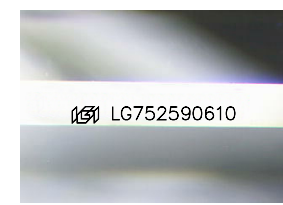
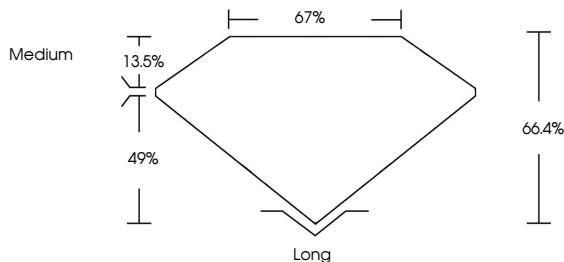
December 1, 2025
IGI Report Number **LG752590610**
Description **LABORATORY GROWN DIAMOND**
Shape and Cutting Style **EMERALD CUT**
Measurements **6.77 X 5.00 X 3.32 MM**

GRADING RESULTS
Carat Weight **1.10 CARAT**
Color Grade **D**
Clarity Grade **VVS 2**

ADDITIONAL GRADING INFORMATION
Polish **EXCELLENT**
Symmetry **EXCELLENT**
Fluorescence **NONE**
Inscription(s) **IGI LG752590610**

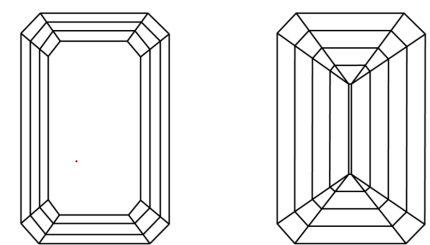
Comments: This Laboratory Grown Diamond was created by Chemical Vapor Deposition (CVD) growth process. Type IIa

PROPORTIONS



Sample Image Used

CLARITY CHARACTERISTICS



KEY TO SYMBOLS

Red symbols indicate internal characteristics.
Green symbols indicate external characteristics.

COLOR

D	E	F	G	H	I	J	Faint	Very Light	Light
---	---	---	---	---	---	---	-------	------------	-------

CLARITY

FL	IF	VVS ¹⁻²	VS ¹⁻²	SI ¹⁻²	I ¹⁻³
Flawless	Internally Flawless	Very Very Slightly Included	Very Slightly Included	Slightly Included	Included

