



ELECTRONIC COPY

LG754583716
Report verification at igi.org



December 7, 2025
IGI Report Number LG754583716
Description LABORATORY GROWN DIAMOND
Shape and Cutting Style CUT CORNERED RECTANGULAR MODIFIED BRILLIANT
Measurements 10.23 X 7.05 X 4.85 MM
GRADING RESULTS
Carat Weight 3.09 CARATS
Color Grade D
Clarity Grade VS 1

December 7, 2025
IGI Report Number LG754583716
Description LABORATORY GROWN DIAMOND
Shape and Cutting Style CUT CORNERED RECTANGULAR MODIFIED BRILLIANT
Measurements 10.23 X 7.05 X 4.85 MM

GRADING RESULTS

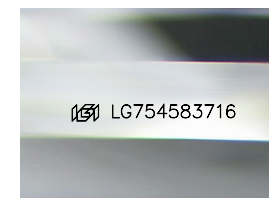
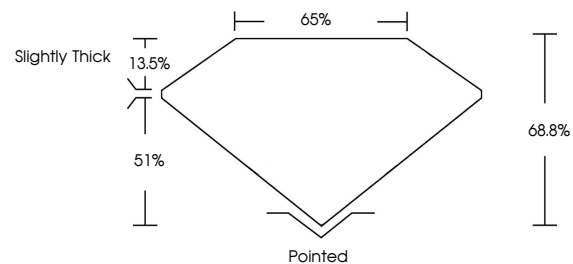
Carat Weight 3.09 CARATS
Color Grade D
Clarity Grade VS 1

ADDITIONAL GRADING INFORMATION

Polish EXCELLENT
Symmetry EXCELLENT
Fluorescence NONE
Inscription(s) LG754583716

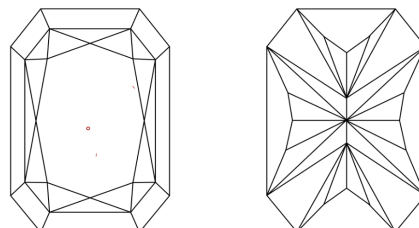
Comments: This Laboratory Grown Diamond was created by Chemical Vapor Deposition (CVD) growth process. Type IIa

PROPORTIONS



Sample Image Used

CLARITY CHARACTERISTICS



KEY TO SYMBOLS

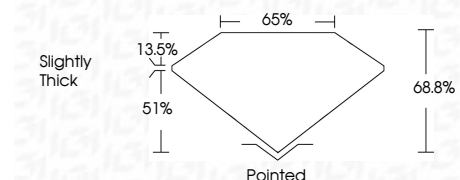
Red symbols indicate internal characteristics.
Green symbols indicate external characteristics.

COLOR

D E F G H I J Faint Very Light Light

CLARITY

FL IF VS 1-2 VS 2-2 SI 1-2 I 1-3
Flawless Internally Flawless Very Very Slightly Included Very Slightly Included Slightly Included Included



ADDITIONAL GRADING INFORMATION

Polish EXCELLENT
Symmetry EXCELLENT
Fluorescence NONE
Inscription(s) LG754583716
Comments: This Laboratory Grown Diamond was created by Chemical Vapor Deposition (CVD) growth process. Type IIa



December 7, 2025
IGI Report No LG754583716
CUT CORNERED RECT. MODIFIED BRILLIANT
10.23 X 7.05 X 4.85 MM
3.09 CARATS
D
3.09 CARATS
D
VS 1
68.8%
65%
Slightly Thick
Pointed
EXCELLENT
EXCELLENT
NONE
NONE
Inscription(s)
IGI LG754583716
Comments: This Laboratory Grown Diamond was created by Chemical Vapor Deposition (CVD) growth process. Type IIa