



ELECTRONIC COPY

LG756540256
Report verification at igi.org



December 13, 2025
IGI Report Number **LG756540256**
Description **LABORATORY GROWN DIAMOND**
Shape and Cutting Style **CUT CORNERED
RECTANGULAR MODIFIED
BRILLIANT**
Measurements **10.36 X 7.15 X 4.81 MM**
GRADING RESULTS
Carat Weight **3.09 CARATS**
Color Grade **G**
Clarity Grade **VS 1**

December 13, 2025
IGI Report Number **LG756540256**
Description **LABORATORY GROWN DIAMOND**
Shape and Cutting Style **CUT CORNERED RECTANGULAR
MODIFIED BRILLIANT**
Measurements **10.36 X 7.15 X 4.81 MM**

GRADING RESULTS

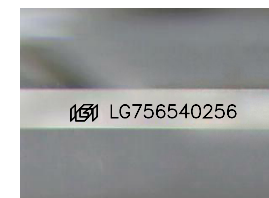
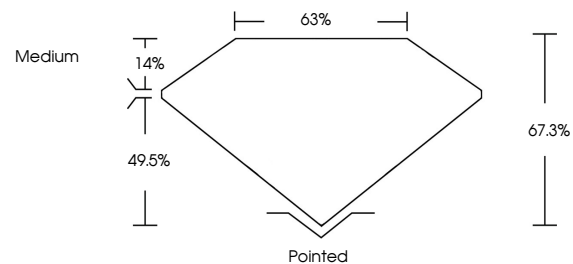
Carat Weight **3.09 CARATS**
Color Grade **G**
Clarity Grade **VS 1**

ADDITIONAL GRADING INFORMATION

Polish **EXCELLENT**
Symmetry **EXCELLENT**
Fluorescence **NONE**
Inscription(s) **IGI LG756540256**

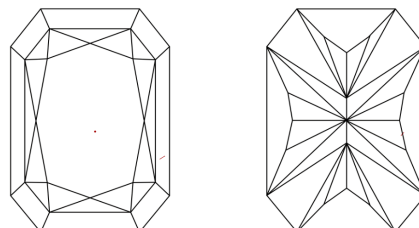
Comments: This Laboratory Grown Diamond was created by Chemical Vapor Deposition (CVD) growth process. Type IIa

PROPORTIONS



Sample Image Used

CLARITY CHARACTERISTICS



KEY TO SYMBOLS

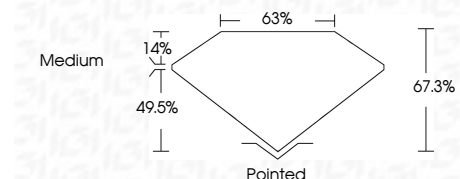
Red symbols indicate internal characteristics.
Green symbols indicate external characteristics.

COLOR

D E F G H I J Faint Very Light Light

CLARITY

FL	IF	VS ¹⁻²	VS ¹⁻²	SI ¹⁻²	I ¹⁻³
Flawless	Internally Flawless	Very Very Slightly Included	Very Slightly Included	Slightly Included	Included



ADDITIONAL GRADING INFORMATION

Polish **EXCELLENT**
Symmetry **EXCELLENT**
Fluorescence **NONE**
Inscription(s) **IGI LG756540256**
Comments: This Laboratory Grown Diamond was created by Chemical Vapor Deposition (CVD) growth process. Type IIa



December 13, 2025
IGI Report No. LG756540256
CUT CORNERED RECT. MODIFIED BRILLIANT
10.36 X 7.15 X 4.81 MM
3.09 CARATS
G
VS 1
67.3%
49.5%
Medium
Pointed
EXCELLENT
EXCELLENT
NONE
IGI LG756540256
Comments: This Laboratory Grown Diamond was created by Chemical Vapor Deposition (CVD) growth process. Type IIa