



ELECTRONIC COPY

LG758586948 Report verification at igi.org



December 24, 2025 IGI Report Number LG758586948 Description LABORATORY GROWN DIAMOND Shape and Cutting Style SQUARE CUSHION MODIFIED BRILLIANT Measurements 7.40 X 7.28 X 4.95 MM GRADING RESULTS Carat Weight 2.06 CARATS Color Grade D Clarity Grade VVS 2

LABORATORY GROWN DIAMOND REPORT

December 24, 2025 IGI Report Number LG758586948 Description LABORATORY GROWN DIAMOND Shape and Cutting Style SQUARE CUSHION MODIFIED BRILLIANT Measurements 7.40 X 7.28 X 4.95 MM

GRADING RESULTS

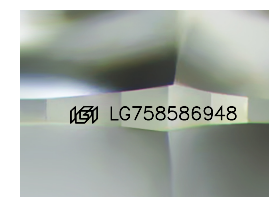
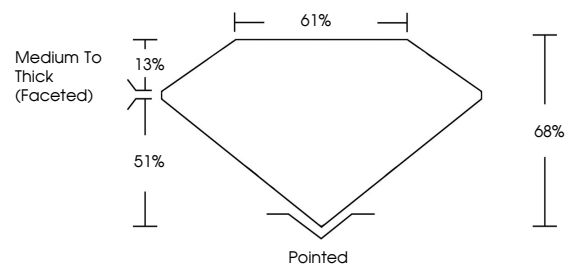
Carat Weight 2.06 CARATS Color Grade D Clarity Grade VVS 2

ADDITIONAL GRADING INFORMATION

Polish EXCELLENT Symmetry EXCELLENT Fluorescence NONE Inscription(s) IGI LG758586948

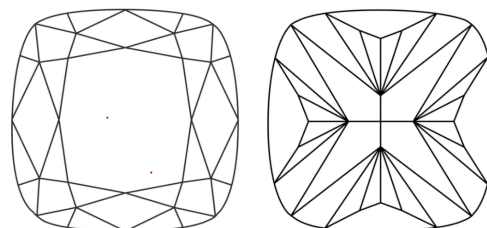
Comments: This Laboratory Grown Diamond was created by Chemical Vapor Deposition (CVD) growth process. Type IIa

PROPORTIONS



Sample Image Used

CLARITY CHARACTERISTICS



KEY TO SYMBOLS

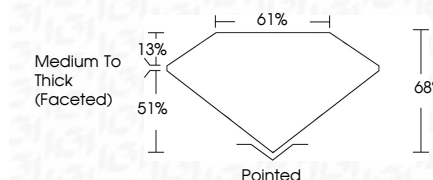
Red symbols indicate internal characteristics. Green symbols indicate external characteristics.

COLOR

D E F G H I J Faint Very Light Light

CLARITY

FL IF VVS 1-2 VS 1-2 SI 1-2 I 1-3 Flawless Internally Flawless Very Very Slightly Included Very Slightly Included Slightly Included Included



ADDITIONAL GRADING INFORMATION

Polish EXCELLENT Symmetry EXCELLENT Fluorescence NONE Inscription(s) IGI LG758586948 Comments: This Laboratory Grown Diamond was created by Chemical Vapor Deposition (CVD) growth process. Type IIa



December 24, 2025 IGI Report No LG758586948 SQUARE CUSHION MODIFIED BRILLIANT 7.40 X 7.28 X 4.95 MM 2.06 CARATS D VVS 2 68% 61% Medium To Thick (Faceted) Pointed EXCELLENT EXCELLENT NONE NONE IGI LG758586948 Comments: This Laboratory Grown Diamond was created by Chemical Vapor Deposition (CVD) growth process. Type IIa