



ELECTRONIC COPY

LABORATORY GROWN DIAMOND REPORT

December 31, 2025 IGI Report Number LG760568881 Description LABORATORY GROWN DIAMOND Shape and Cutting Style CUT CORNERED RECTANGULAR MODIFIED BRILLIANT Measurements 9.90 X 7.19 X 4.91 MM

GRADING RESULTS

Carat Weight 3.02 CARATS Color Grade F Clarity Grade VS 2

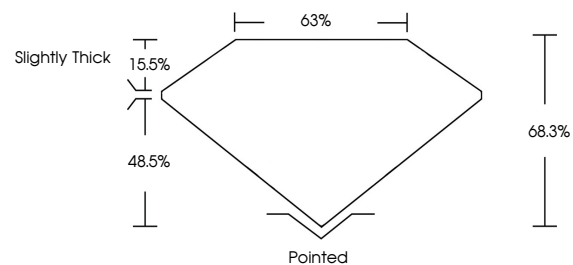
ADDITIONAL GRADING INFORMATION

Polish EXCELLENT Symmetry EXCELLENT Fluorescence NONE

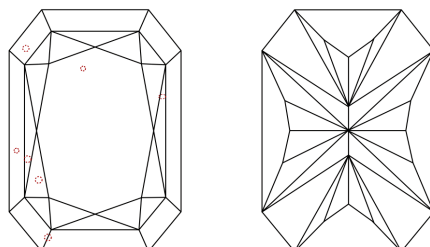
Inscription(s) IGI LG760568881

Comments: This Laboratory Grown Diamond was created by Chemical Vapor Deposition (CVD) growth process. Type IIa

PROPORTIONS

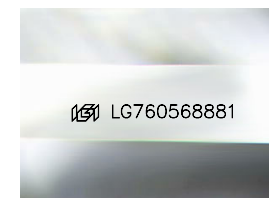


CLARITY CHARACTERISTICS



KEY TO SYMBOLS

Red symbols indicate internal characteristics. Green symbols indicate external characteristics.



Sample Image Used

COLOR

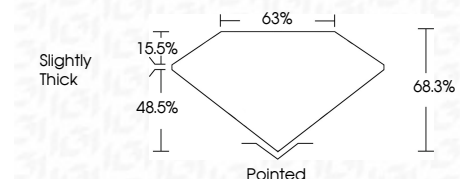
D E F G H I J Faint Very Light Light

CLARITY

FL IF VS 1-2 VS 1-2 SI 1-2 I 1-3 Flawless Internally Flawless Very Very Slightly Included Very Slightly Included Slightly Included Included



December 31, 2025 IGI Report Number LG760568881 Description LABORATORY GROWN DIAMOND Shape and Cutting Style CUT CORNERED RECTANGULAR MODIFIED BRILLIANT Measurements 9.90 X 7.19 X 4.91 MM GRADING RESULTS Carat Weight 3.02 CARATS Color Grade F Clarity Grade VS 2



ADDITIONAL GRADING INFORMATION

Polish EXCELLENT Symmetry EXCELLENT Fluorescence NONE Inscription(s) IGI LG760568881 Comments: This Laboratory Grown Diamond was created by Chemical Vapor Deposition (CVD) growth process. Type IIa



December 31, 2025 IGI Report No LG760568881 CUT CORNERED RECT. MODIFIED BRILLIANT 9.90 X 7.19 X 4.91 MM 3.02 CARATS F VS 2 68.3% 63% Slightly Thick Pointed EXCELLENT EXCELLENT NONE NONE IGI LG760568881 Comments: This Laboratory Grown Diamond was created by Chemical Vapor Deposition (CVD) growth process. Type IIa