



ELECTRONIC COPY

LABORATORY GROWN DIAMOND REPORT

December 26, 2025  
IGI Report Number LG760589115  
Description LABORATORY GROWN DIAMOND  
Shape and Cutting Style CUT CORNERED RECTANGULAR MODIFIED BRILLIANT  
Measurements 9.93 X 7.27 X 4.96 MM

GRADING RESULTS

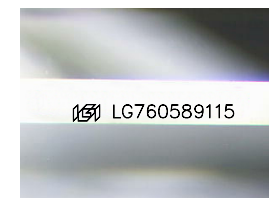
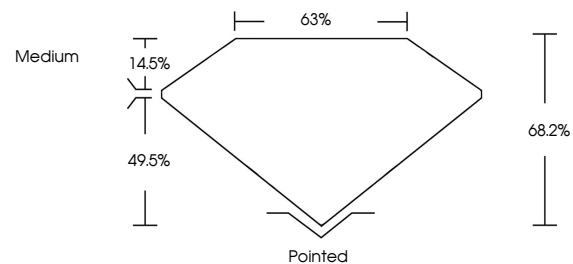
Carat Weight 3.10 CARATS  
Color Grade F  
Clarity Grade VS 1

ADDITIONAL GRADING INFORMATION

Polish EXCELLENT  
Symmetry EXCELLENT  
Fluorescence NONE  
Inscription(s) IGI LG760589115

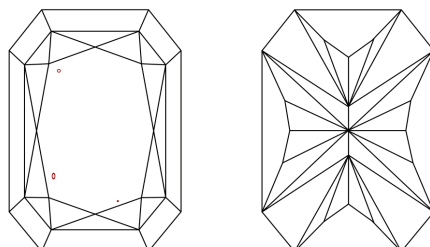
Comments: This Laboratory Grown Diamond was created by Chemical Vapor Deposition (CVD) growth process.  
Type IIa

PROPORTIONS



Sample Image Used

CLARITY CHARACTERISTICS



KEY TO SYMBOLS

Red symbols indicate internal characteristics.  
Green symbols indicate external characteristics.

COLOR

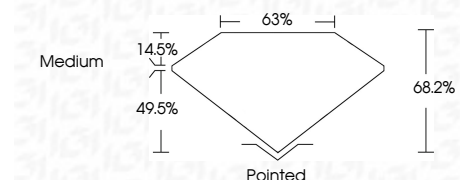
D E F G H I J Faint Very Light Light

CLARITY

FL IF VS 1-2 VS 2-3 SI 1-2 I 1-3  
Flawless Internally Flawless Very Very Slightly Included Very Slightly Included Slightly Included Included



December 26, 2025  
IGI Report Number LG760589115  
Description LABORATORY GROWN DIAMOND  
Shape and Cutting Style CUT CORNERED RECTANGULAR MODIFIED BRILLIANT  
Measurements 9.93 X 7.27 X 4.96 MM  
GRADING RESULTS  
Carat Weight 3.10 CARATS  
Color Grade F  
Clarity Grade VS 1



ADDITIONAL GRADING INFORMATION

Polish EXCELLENT  
Symmetry EXCELLENT  
Fluorescence NONE  
Inscription(s) IGI LG760589115  
Comments: This Laboratory Grown Diamond was created by Chemical Vapor Deposition (CVD) growth process.  
Type IIa



IGI



December 26, 2025  
IGI Report No LG760589115  
CUT CORNERED RECT. MODIFIED BRILLIANT  
9.93 X 7.27 X 4.96 MM  
3.10 CARATS  
F  
VS 1  
68.2%  
63%  
Medium  
Pointed  
EXCELLENT  
EXCELLENT  
NONE  
IGI LG760589115

Comments: This Laboratory Grown Diamond was created by Chemical Vapor Deposition (CVD) growth process.  
Type IIa