



**ELECTRONIC COPY**

**LABORATORY GROWN DIAMOND REPORT**

December 30, 2025  
IGI Report Number **LG762501320**  
Description **LABORATORY GROWN DIAMOND**  
Shape and Cutting Style **CUT CORNERED RECTANGULAR MODIFIED BRILLIANT**  
Measurements **10.23 X 7.24 X 4.88 MM**

**GRADING RESULTS**

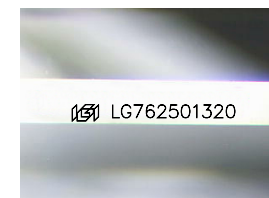
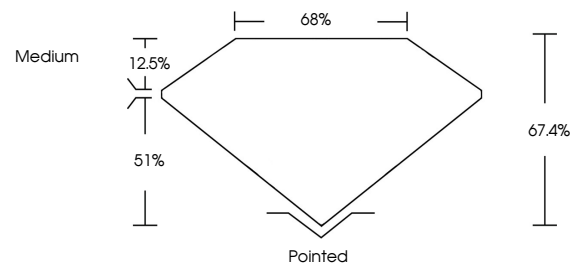
Carat Weight **3.09 CARATS**  
Color Grade **D**  
Clarity Grade **VS 1**

**ADDITIONAL GRADING INFORMATION**

Polish **EXCELLENT**  
Symmetry **EXCELLENT**  
Fluorescence **NONE**  
Inscription(s) **IGI LG762501320**

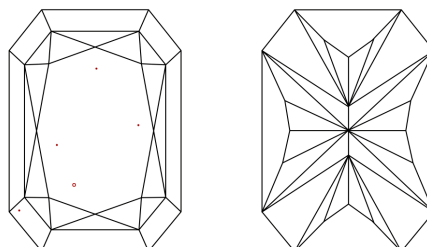
Comments: This Laboratory Grown Diamond was created by Chemical Vapor Deposition (CVD) growth process.  
Type IIa

**PROPORTIONS**



Sample Image Used

**CLARITY CHARACTERISTICS**



**KEY TO SYMBOLS**

Red symbols indicate internal characteristics.  
Green symbols indicate external characteristics.

**COLOR**

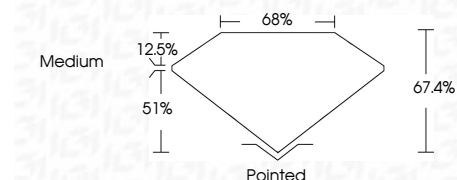
D E F G H I J Faint Very Light Light

**CLARITY**

FL	IF	VS <sup>1-2</sup>	VS <sup>1-2</sup>	SI <sup>1-2</sup>	I <sup>1-3</sup>
Flawless	Internally Flawless	Very Very Slightly Included	Very Slightly Included	Slightly Included	Included



December 30, 2025  
IGI Report Number **LG762501320**  
Description **LABORATORY GROWN DIAMOND**  
Shape and Cutting Style **CUT CORNERED RECTANGULAR MODIFIED BRILLIANT**  
Measurements **10.23 X 7.24 X 4.88 MM**  
**GRADING RESULTS**  
Carat Weight **3.09 CARATS**  
Color Grade **D**  
Clarity Grade **VS 1**



**ADDITIONAL GRADING INFORMATION**

Polish **EXCELLENT**  
Symmetry **EXCELLENT**  
Fluorescence **NONE**  
Inscription(s) **IGI LG762501320**  
Comments: This Laboratory Grown Diamond was created by Chemical Vapor Deposition (CVD) growth process.  
Type IIa



December 30, 2025  
IGI Report No LG762501320  
CUT CORNERED RECT. MODIFIED BRILLIANT  
10.23 X 7.24 X 4.88 MM  
3.09 CARATS  
D  
3.09 CARATS  
D  
VS 1  
67.4%  
68%  
Medium  
Pointed  
EXCELLENT  
EXCELLENT  
NONE  
IGI LG762501320  
Comments: This Laboratory Grown Diamond was created by Chemical Vapor Deposition (CVD) growth process.  
Type IIa