



**ELECTRONIC COPY**

LG762532060  
Report verification at igi.org



December 31, 2025

IGI Report Number **LG762532060**

Description **LABORATORY GROWN DIAMOND**

Shape and Cutting Style **CUT CORNERED  
RECTANGULAR MODIFIED  
BRILLIANT**

Measurements **10.44 X 7.19 X 4.82 MM**

**GRADING RESULTS**

Carat Weight **3.10 CARATS**

Color Grade **F**

Clarity Grade **VS 1**

December 31, 2025

IGI Report Number **LG762532060**

Description **LABORATORY GROWN DIAMOND**

Shape and Cutting Style **CUT CORNERED RECTANGULAR  
MODIFIED BRILLIANT**

Measurements **10.44 X 7.19 X 4.82 MM**

**GRADING RESULTS**

Carat Weight **3.10 CARATS**

Color Grade **F**

Clarity Grade **VS 1**

**ADDITIONAL GRADING INFORMATION**

Polish **EXCELLENT**

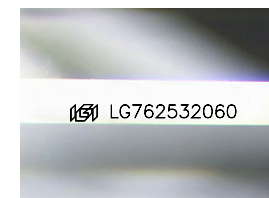
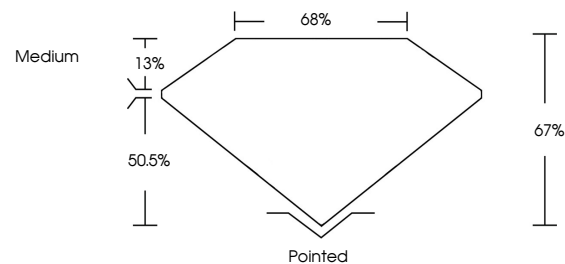
Symmetry **EXCELLENT**

Fluorescence **NONE**

Inscription(s) **IGI LG762532060**

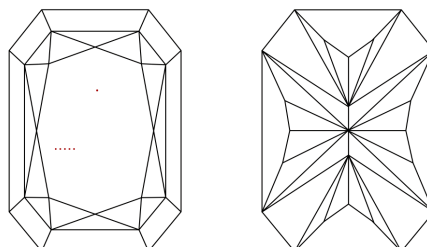
Comments: This Laboratory Grown Diamond was created by Chemical Vapor Deposition (CVD) growth process. Type IIa

**PROPORTIONS**



Sample Image Used

**CLARITY CHARACTERISTICS**



**KEY TO SYMBOLS**

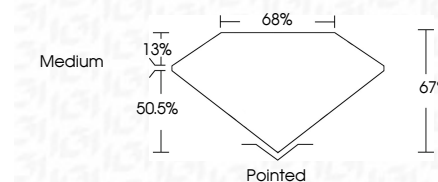
Red symbols indicate internal characteristics.  
Green symbols indicate external characteristics.

**COLOR**

D E F G H I J Faint Very Light Light

**CLARITY**

FL	IF	VS <sup>1-2</sup>	VS <sup>1-2</sup>	SI <sup>1-2</sup>	I <sup>1-3</sup>
Flawless	Internally Flawless	Very Very Slightly Included	Very Slightly Included	Slightly Included	Included



**ADDITIONAL GRADING INFORMATION**

Polish **EXCELLENT**

Symmetry **EXCELLENT**

Fluorescence **NONE**

Inscription(s) **IGI LG762532060**

Comments: This Laboratory Grown Diamond was created by Chemical Vapor Deposition (CVD) growth process. Type IIa



**IGI**



December 31, 2025  
IGI Report No LG762532060  
CUT CORNERED RECT. MODIFIED BRILLIANT  
10.44 X 7.19 X 4.82 MM  
3.10 CARATS  
F  
Color Grade  
VS 1  
Depth 67%  
Table 65%  
Medium  
Pointed  
EXCELLENT  
EXCELLENT  
NONE  
NONE  
IGI LG762532060  
Comments: This Laboratory Grown Diamond was created by Chemical Vapor Deposition (CVD) growth process. Type IIa