



ELECTRONIC COPY

LG762581409 Report verification at igi.org



January 7, 2026 IGI Report Number LG762581409 Description LABORATORY GROWN DIAMOND Shape and Cutting Style CUT CORNERED RECTANGULAR MODIFIED BRILLIANT Measurements 10.41 X 7.24 X 4.74 MM GRADING RESULTS Carat Weight 3.10 CARATS Color Grade F Clarity Grade VS 1

January 7, 2026 IGI Report Number LG762581409 Description LABORATORY GROWN DIAMOND Shape and Cutting Style CUT CORNERED RECTANGULAR MODIFIED BRILLIANT Measurements 10.41 X 7.24 X 4.74 MM

GRADING RESULTS

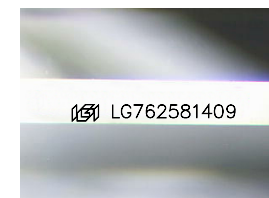
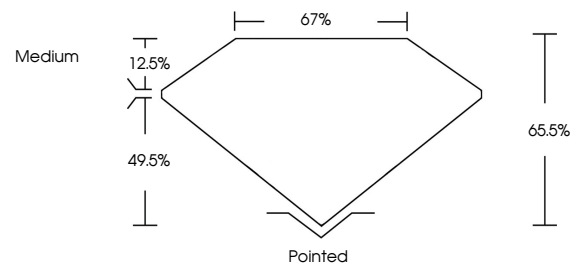
Carat Weight 3.10 CARATS Color Grade F Clarity Grade VS 1

ADDITIONAL GRADING INFORMATION

Polish EXCELLENT Symmetry EXCELLENT Fluorescence NONE Inscription(s) LG762581409

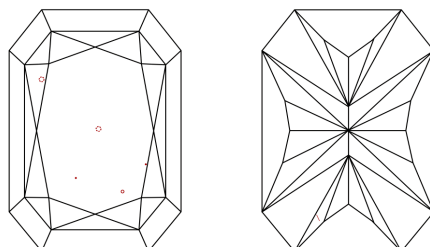
Comments: This Laboratory Grown Diamond was created by Chemical Vapor Deposition (CVD) growth process. Type IIa

PROPORTIONS



Sample Image Used

CLARITY CHARACTERISTICS



KEY TO SYMBOLS

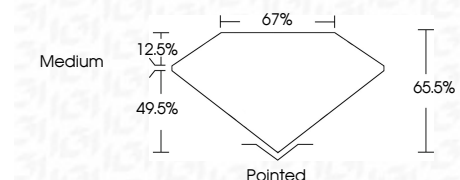
Red symbols indicate internal characteristics. Green symbols indicate external characteristics.

COLOR

D E F G H I J Faint Very Light Light

CLARITY

FL IF VS 1-2 VS 2-3 SI 1-2 SI 2-3 I 1-3 Flawless Internally Flawless Very Very Slightly Included Very Slightly Included Slightly Included Included



ADDITIONAL GRADING INFORMATION

Polish EXCELLENT Symmetry EXCELLENT Fluorescence NONE Inscription(s) LG762581409 Comments: This Laboratory Grown Diamond was created by Chemical Vapor Deposition (CVD) growth process. Type IIa



IGI



January 7, 2026 IGI Report No LG762581409 CUT CORNERED RECT. MODIFIED BRILLIANT 10.41 X 7.24 X 4.74 MM 3.10 CARATS F Color Grade VS 1 Clarity Grade 65.5% Depth 67% Table Medium Girdle Polished Culet EXCELLENT Polish EXCELLENT Symmetry EXCELLENT Fluorescence NONE Fluorescence NONE Inscription(s) LG762581409

Comments: This Laboratory Grown Diamond was created by Chemical Vapor Deposition (CVD) growth process. Type IIa