



ELECTRONIC COPY

LG763604319
Report verification at igi.org



January 7, 2026

IGI Report Number LG763604319

Description LABORATORY GROWN DIAMOND

Shape and Cutting Style CUT CORNERED RECTANGULAR MODIFIED BRILLIANT

Measurements 10.03 X 7.22 X 4.77 MM

GRADING RESULTS

Carat Weight 3.02 CARATS

Color Grade F

Clarity Grade VS 1

January 7, 2026

IGI Report Number LG763604319

Description LABORATORY GROWN DIAMOND

Shape and Cutting Style CUT CORNERED RECTANGULAR MODIFIED BRILLIANT

Measurements 10.03 X 7.22 X 4.77 MM

GRADING RESULTS

Carat Weight 3.02 CARATS

Color Grade F

Clarity Grade VS 1

ADDITIONAL GRADING INFORMATION

Polish EXCELLENT

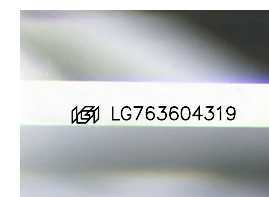
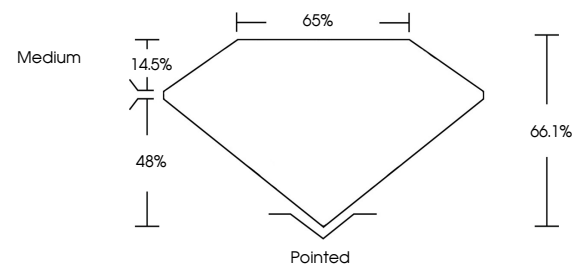
Symmetry EXCELLENT

Fluorescence NONE

Inscription(s) LG763604319

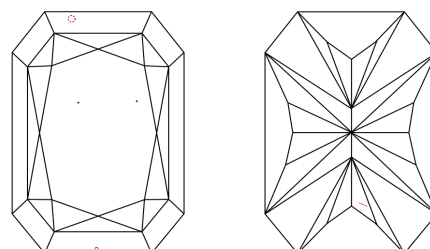
Comments: This Laboratory Grown Diamond was created by Chemical Vapor Deposition (CVD) growth process. Type IIa

PROPORTIONS



Sample Image Used

CLARITY CHARACTERISTICS



KEY TO SYMBOLS

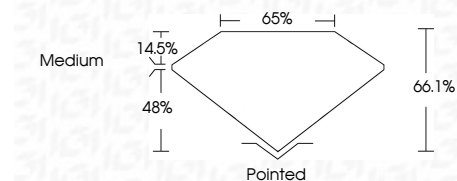
Red symbols indicate internal characteristics. Green symbols indicate external characteristics.

COLOR

D E F G H I J Faint Very Light Light

CLARITY

FL IF VS 1-2 VS 2-3 SI 1-2 I 1-3
Flawless Internally Flawless Very Very Slightly Included Very Slightly Included Slightly Included Included



ADDITIONAL GRADING INFORMATION

Polish EXCELLENT

Symmetry EXCELLENT

Fluorescence NONE

Inscription(s) LG763604319

Comments: This Laboratory Grown Diamond was created by Chemical Vapor Deposition (CVD) growth process. Type IIa



January 7, 2026
IGI Report No LG763604319
CUT CORNERED RECT. MODIFIED BRILLIANT
10.03 X 7.22 X 4.77 MM
3.02 CARATS
F
VS 1
66.1%
65%
Medium
Pointed
EXCELLENT
EXCELLENT
NONE
LG763604319
Comments: This Laboratory Grown Diamond was created by Chemical Vapor Deposition (CVD) growth process. Type IIa