



**ELECTRONIC COPY**

LG766667222  
Report verification at igi.org



January 19, 2026

IGI Report Number **LG766667222**

Description **LABORATORY GROWN DIAMOND**

Shape and Cutting Style **PRINCESS CUT**

Measurements **8.93 X 8.70 X 5.98 MM**

**GRADING RESULTS**

Carat Weight **4.04 CARATS**

Color Grade **F**

Clarity Grade **VVS 2**

January 19, 2026

IGI Report Number **LG766667222**

Description **LABORATORY GROWN DIAMOND**

Shape and Cutting Style **PRINCESS CUT**

Measurements **8.93 X 8.70 X 5.98 MM**

**GRADING RESULTS**

Carat Weight **4.04 CARATS**

Color Grade **F**

Clarity Grade **VVS 2**

**ADDITIONAL GRADING INFORMATION**

Polish **EXCELLENT**

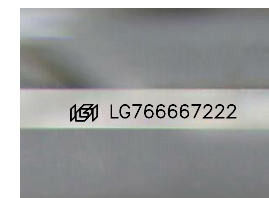
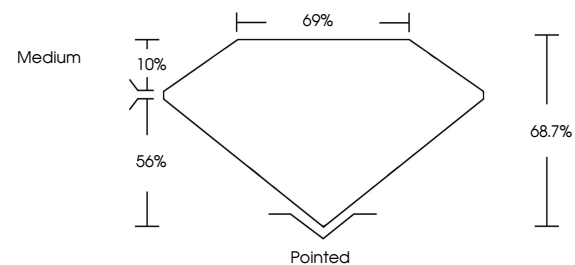
Symmetry **EXCELLENT**

Fluorescence **NONE**

Inscription(s) **IGI LG766667222**

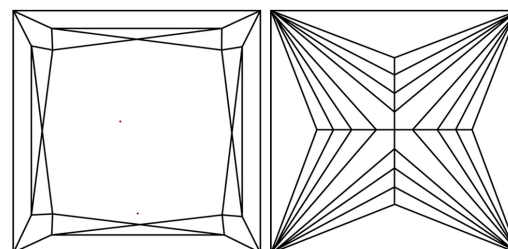
Comments: This Laboratory Grown Diamond was created by Chemical Vapor Deposition (CVD) growth process. Type IIa

**PROPORTIONS**



Sample Image Used

**CLARITY CHARACTERISTICS**



**KEY TO SYMBOLS**

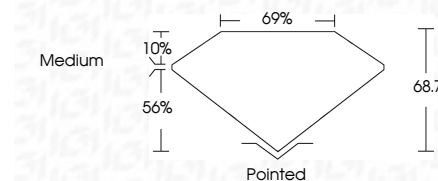
Red symbols indicate internal characteristics.  
Green symbols indicate external characteristics.

**COLOR**

D E F G H I J Faint Very Light Light

**CLARITY**

FL	IF	VVS <sup>1-2</sup>	VS <sup>1-2</sup>	SI <sup>1-2</sup>	I <sup>1-3</sup>
Flawless	Internally Flawless	Very Very Slightly Included	Very Slightly Included	Slightly Included	Included



**ADDITIONAL GRADING INFORMATION**

Polish **EXCELLENT**

Symmetry **EXCELLENT**

Fluorescence **NONE**

Inscription(s) **IGI LG766667222**

Comments: This Laboratory Grown Diamond was created by Chemical Vapor Deposition (CVD) growth process. Type IIa



**IGI**



January 19, 2026  
IGI Report No LG766667222  
PRINCESS CUT  
8.93 X 8.70 X 5.98 MM  
4.04 CARATS  
F  
VVS 2  
68.7%  
56%  
Medium  
Pointed  
EXCELLENT  
EXCELLENT  
NONE  
IGI LG766667222  
Comments: This Laboratory Grown Diamond was created by Chemical Vapor Deposition (CVD) growth process. Type IIa