



**ELECTRONIC COPY**

LG767610650  
Report verification at igi.org



January 21, 2026

IGI Report Number **LG767610650**

Description **LABORATORY GROWN DIAMOND**

Shape and Cutting Style **PRINCESS CUT**

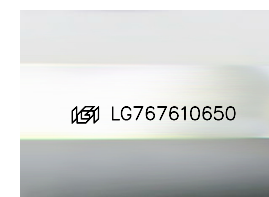
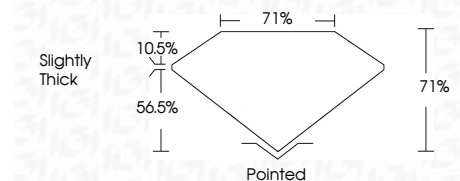
Measurements **8.79 X 8.60 X 6.11 MM**

**GRADING RESULTS**

Carat Weight **4.08 CARATS**

Color Grade **E**

Clarity Grade **VS 1**



Sample Image Used

**ADDITIONAL GRADING INFORMATION**

Polish **EXCELLENT**

Symmetry **EXCELLENT**

Fluorescence **NONE**

Inscription(s) **IGI LG767610650**

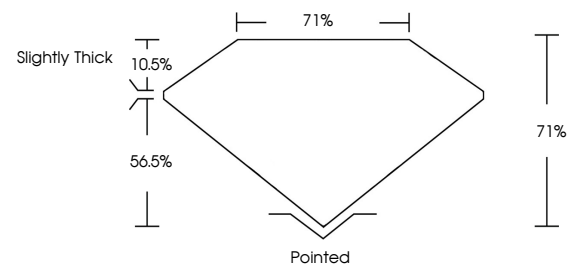
Comments: This Laboratory Grown Diamond was created by Chemical Vapor Deposition (CVD) growth process. Type IIa



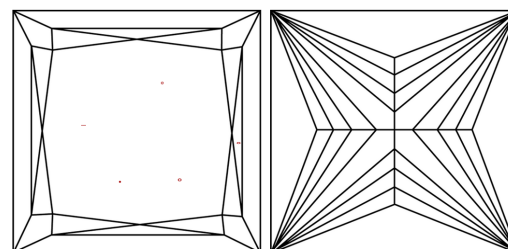
January 21, 2026	IGI Report No LG767610650	<b>4.08 CARATS</b>	<b>E</b>	<b>VS 1</b>	<b>71%</b>	<b>71%</b>	<b>Slightly Thick</b>	<b>Pointed</b>
<b>PRINCESS CUT</b>	<b>8.79 X 8.60 X 6.11 MM</b>	Carat Weight	Color Grade	Clarity Grade	Table	Depth	Girdle	Culet
								Polish
								Symmetry
								Fluorescence
								Inscription(s)
								IGI LG767610650

Comments: This Laboratory Grown Diamond was created by Chemical Vapor Deposition (CVD) growth process. Type IIa

**PROPORTIONS**



**CLARITY CHARACTERISTICS**



**KEY TO SYMBOLS**

Red symbols indicate internal characteristics.  
Green symbols indicate external characteristics.

**COLOR**

D E F G H I J Faint Very Light Light

**CLARITY**

FL	IF	VS <sup>1-2</sup>	VS <sup>1-2</sup>	SI <sup>1-2</sup>	I <sup>1-3</sup>
Flawless	Internally Flawless	Very Very Slightly Included	Very Slightly Included	Slightly Included	Included

