



ELECTRONIC COPY

LABORATORY GROWN DIAMOND REPORT

January 27, 2026  
IGI Report Number LG769613789  
Description LABORATORY GROWN DIAMOND  
Shape and Cutting Style SQUARE CUSHION MODIFIED BRILLIANT  
Measurements 7.40 X 7.37 X 4.99 MM

GRADING RESULTS

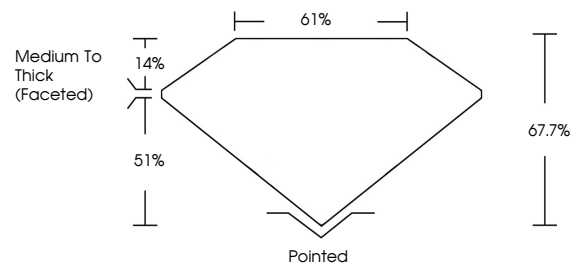
Carat Weight 2.06 CARATS  
Color Grade E  
Clarity Grade VS 1

ADDITIONAL GRADING INFORMATION

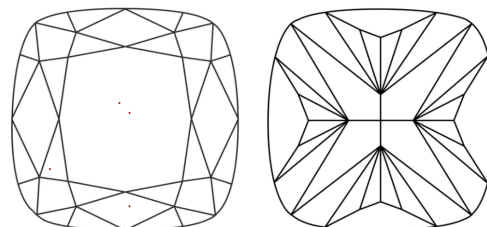
Polish EXCELLENT  
Symmetry EXCELLENT  
Fluorescence NONE  
Inscription(s) IGI LG769613789

Comments: This Laboratory Grown Diamond was created by Chemical Vapor Deposition (CVD) growth process.  
Type IIa

PROPORTIONS

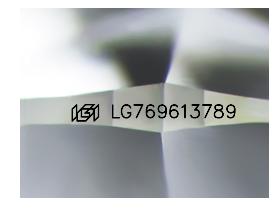


CLARITY CHARACTERISTICS



KEY TO SYMBOLS

Red symbols indicate internal characteristics.  
Green symbols indicate external characteristics.



Sample Image Used

COLOR

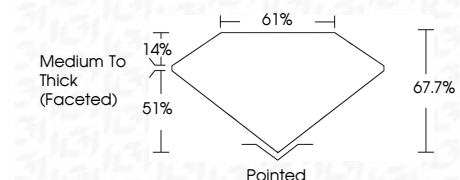
D E F G H I J Faint Very Light Light

CLARITY

FL IF VS 1-2 VS 2-3 SI 1-2 I 1-3  
Flawless Internally Flawless Very Very Slightly Included Very Slightly Included Slightly Included Included



January 27, 2026  
IGI Report Number LG769613789  
Description LABORATORY GROWN DIAMOND  
Shape and Cutting Style SQUARE CUSHION MODIFIED BRILLIANT  
Measurements 7.40 X 7.37 X 4.99 MM  
GRADING RESULTS  
Carat Weight 2.06 CARATS  
Color Grade E  
Clarity Grade VS 1



ADDITIONAL GRADING INFORMATION

Polish EXCELLENT  
Symmetry EXCELLENT  
Fluorescence NONE  
Inscription(s) IGI LG769613789  
Comments: This Laboratory Grown Diamond was created by Chemical Vapor Deposition (CVD) growth process.  
Type IIa



January 27, 2026  
IGI Report No LG769613789  
SQUARE CUSHION MODIFIED BRILLIANT  
7.40 X 7.37 X 4.99 MM  
2.06 CARATS  
E  
VS 1  
67.7%  
61%  
Medium To Thick (Faceted)  
Pointed  
EXCELLENT  
EXCELLENT  
NONE  
IGI LG769613789  
Comments: This Laboratory Grown Diamond was created by Chemical Vapor Deposition (CVD) growth process.  
Type IIa